

Supporting a more **connected** future



# New Site Prospectus

## ST4-01

King Street, Stoke on Trent, ST4 3EF



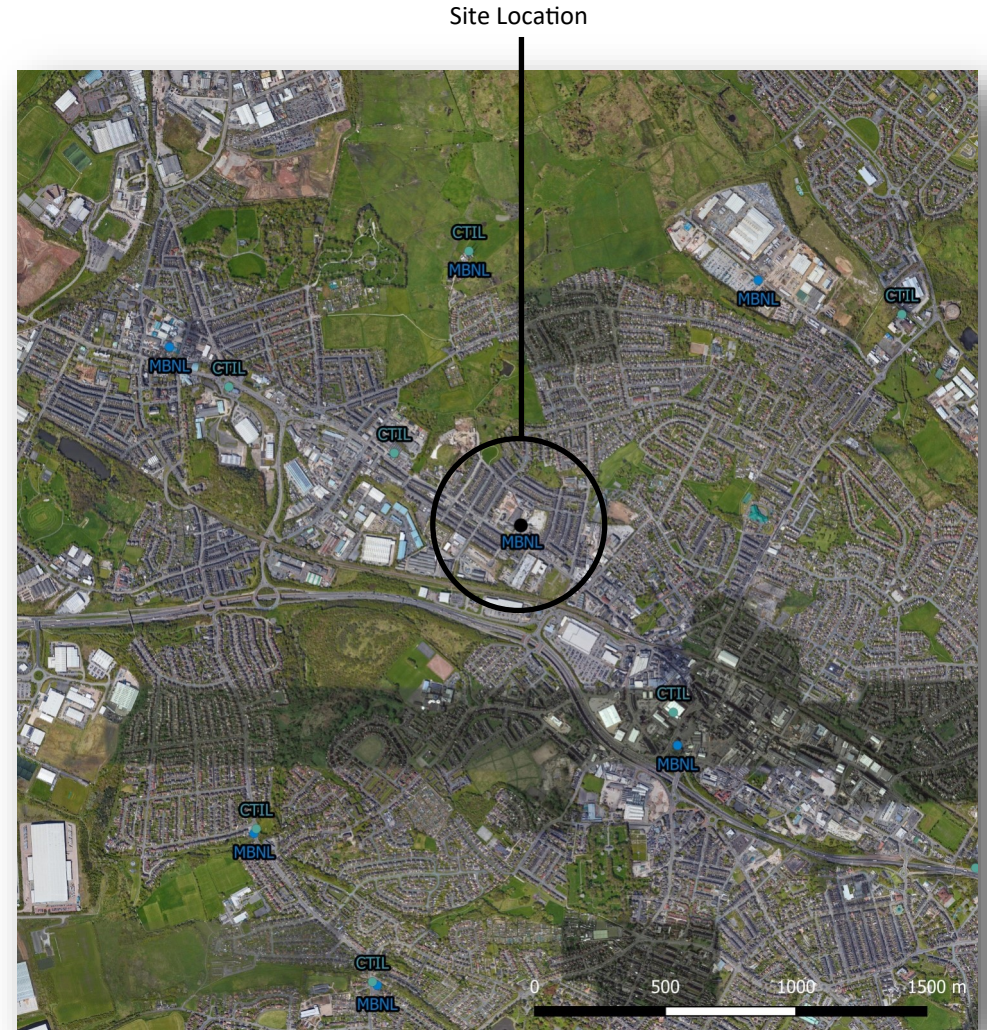
**ATLAS**  
TOWER GROUP

# Overview

King Street is a densely populated mix of residential and businesses adjacent to key rail and motorway routes serving the West of Stoke on Trent.

The area around Fenton would benefit from a modern tower to replace existing street sites and low level rooftop installations deployed in the early 2000s, to support new and improved 4G and 5G services in the area.

Atlas Tower Group have acquired a site with full legal completion and planning consent for a 23m lattice tower adjacent to an existing MBNL site as shown in the plan opposite. The site can be built and made ready for integration within 3 months from date of instruction.



[Link to Google map location](#)

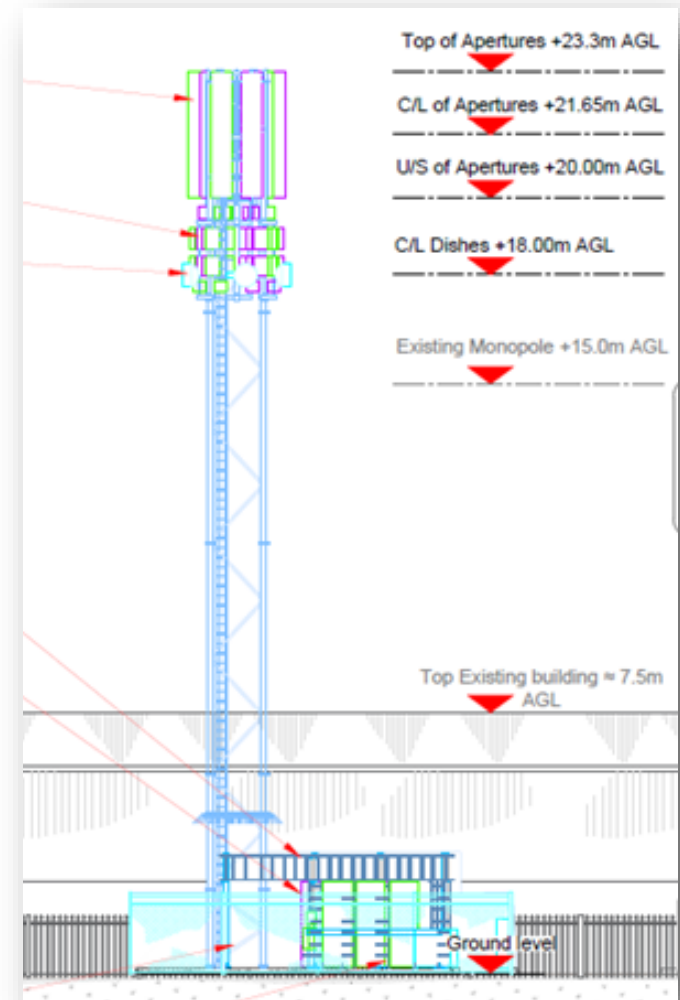
**King Street, Stoke on Trent, ST4 3EF**



**ATLAS**  
TOWER GROUP

# Key particulars

<b>STATUS</b>	<b>READY TO BUILD</b>
<b>Planning Consent</b>	Granted 09-11-2020. No conditions. Planning Ref: 65738/
<b>Lease</b>	Lease engrossed and completed 15 October 2021
<b>Term</b>	20 years
<b>Time to build</b>	3 months from accepted instruction
<b>Tower</b>	23.0m lattice tower
<b>Capacity</b>	One passive and one active antenna per operator (stacked)
<b>Sharable</b>	Yes, up to two operators
<b>Address</b>	King Street, Stoke on Trent, ST4 3EF
<b>Lat/Long</b>	52.9938205, -2.14300195
<b>Easting, Northing</b>	390529, 344061
<b>Access</b>	24/7 365 access with no prior notification



**King Street, Stoke on Trent, ST4 3EF**



**ATLAS**  
TOWER GROUP

# Modelling

## Line of Sight (LOS) Predicted Coverage from new site

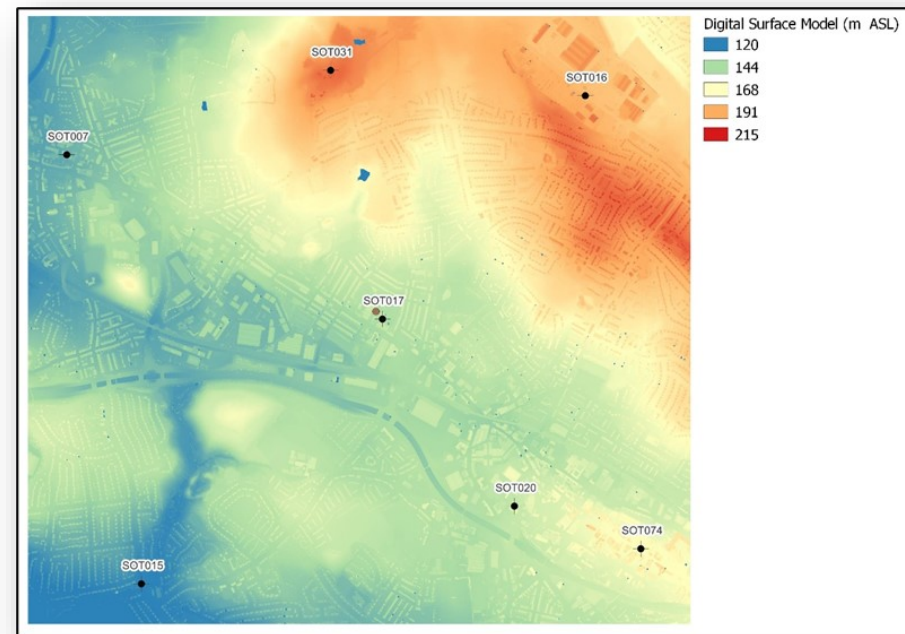
Detailed modelling using 1.0m resolution LIDAR data predicts very good LOS to the surrounding area. The industrial area to the West of the site shows particularly good LOS, an area currently poorly served by existing infrastructure due to terrain restraints.



Contains public sector information licensed under the Open Government Licence v3.0

## Terrain Modelling Data

Terrain modelling shows that the area to the West of East of the proposed site is significantly lower than the terrain to the North. The site offers improved coverage to the low lying industrial and retail area adjacent to the A50 trunk round and Crewe to Derby railway line.



Contains public sector information licensed under the Open Government Licence v3.0

**King Street, Stoke on Trent, ST4 3EF**



**ATLAS**  
TOWER GROUP

# Panoramics

Taken from 20m AGL (March 2020)



**King Street, Stoke on Trent, ST4 3EF**



**ATLAS**  
TOWER GROUP